

linkagency

3 Bedroom House - Terraced for Sale

Offers Over £220,000

6 Willow Court, Selby, North Yorkshire, YO8 8RN



KEY FEATURES

- FABULOUS VALUE FOR MONEY
- MODERN CONSTRUCTION PROVIDING AN ENERGY EFFICIENT HOME
- EX-RENTAL WHICH HAS BEEN VERY WELL CARED FOR BY THE OWNER AND TENANT
- WOULD BENEFIT FROM DECORATION AND SOME LIGHT MAINTENANCE
- EPC DUE WITHIN 7 DAYS OF GOING TO MARKET
- THE AGENT ANTICIPATES EARLY INTEREST

HEAD OFFICE

93 Pasture Road, Goole, East Yorkshire, DN14 6BP

Telephone: 01405 768401
Email: enquiries@linkagency.co.uk
Website: <https://www.linkagency.co.uk>







linkagency

Approximate Gross Internal Floor Area = 106.6 sq m / 1148 sq ft
Garage Area = 15.3 sq m / 165 sq ft
Total Area = 122.0 sq m / 1313 sq ft

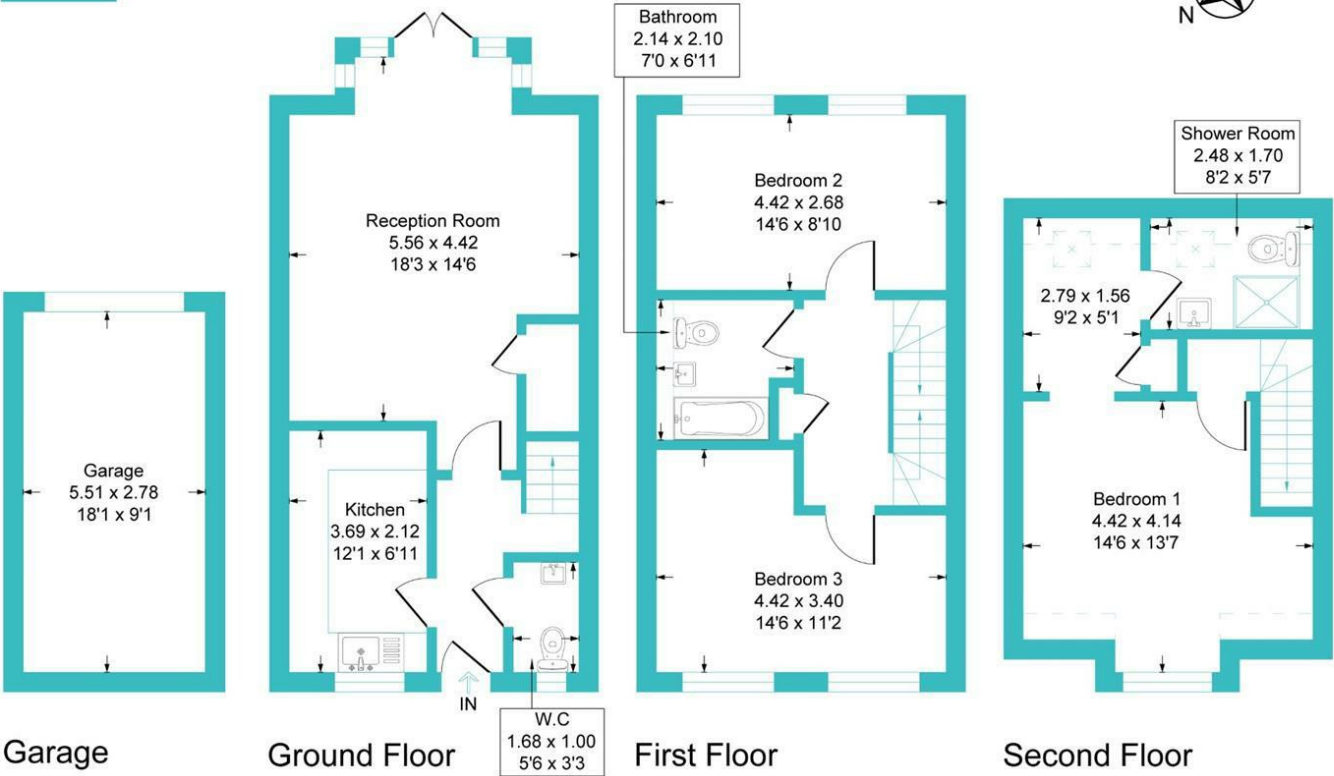


Illustration for identification purposes only, measurements are approximate, not to scale.

Energy Efficiency Rating		
	Current	Potential
Very energy efficient - lower running costs		
(92 plus) A		
(81-91) B		
(69-80) C		
(55-68) D		
(39-54) E		
(21-38) F		
(1-20) G		
Not energy efficient - higher running costs		
England & Wales	EU Directive 2002/91/EC	

Disclaimer

These particulars are produced in good faith. They are set out as a general guide only and do not constitute, any part of an offer or a contract. None of the statements contained in these particulars as to this property are to be relied on as statements or representations of fact. Any intending purchaser should satisfy him/herself by inspection of the property or otherwise as to the correctness of each of the statements prior to making an offer. No person in the employment of, or association with, Link Agency, has any authority to make or give any representation or warranty whatsoever in relation to this property.